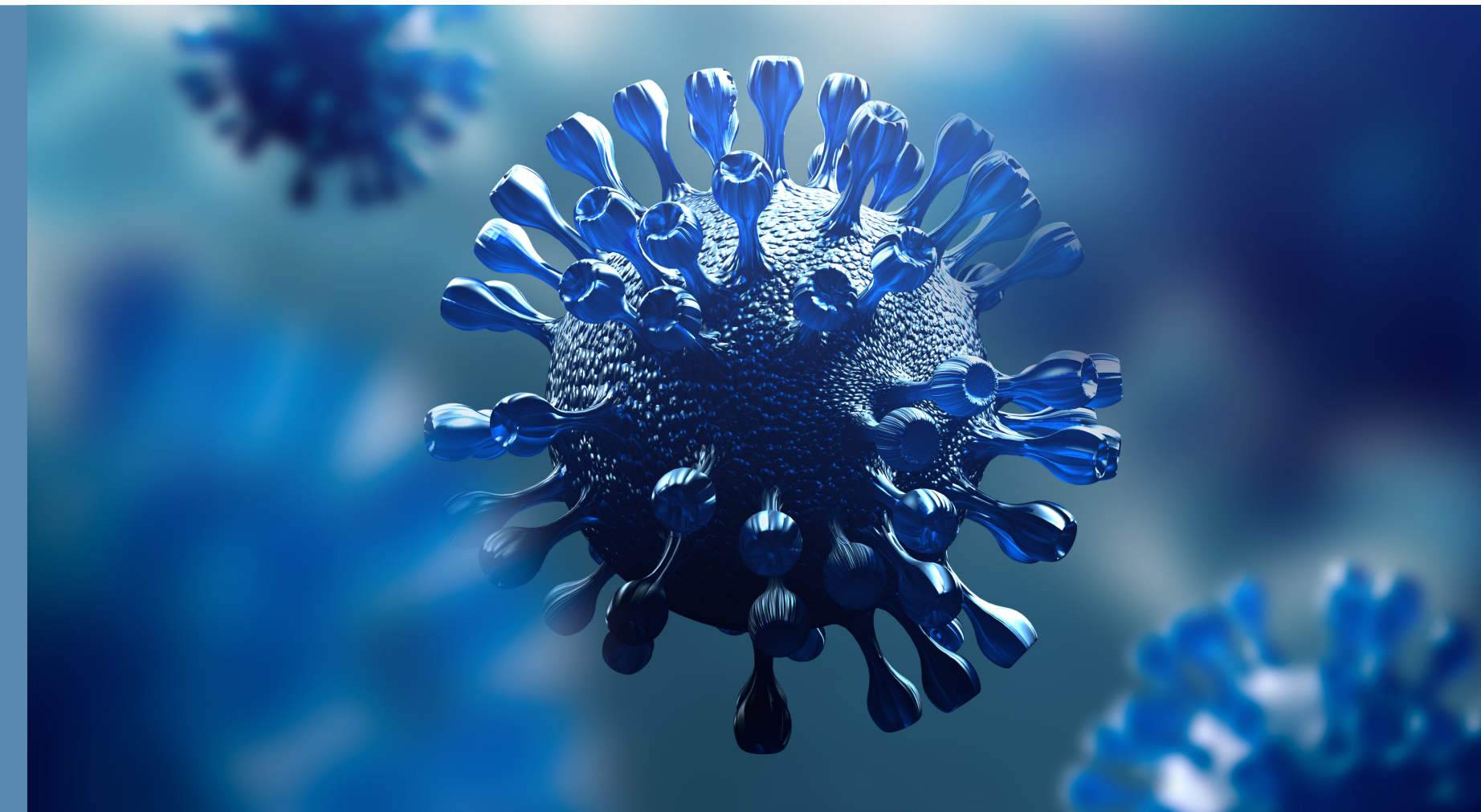


COVID-19

Quarantine Guidance



Employee's Vaccination Status	Tested +	Caltrans Close Contact	External (Personal) Close Contact
Vaccinated and if eligible, boosted* <i>*It has been 6 months or more since 2nd dose of Moderna or Pfizer; or it has been 2 months or more since Johnson and Johnson vaccine</i>	Quarantine for 10 days	May continue to work but must wear a face covering around others (indoors and outdoors) for 10 days and monitor for symptoms. It is recommended the employee tests on day 5 after exposure to ensure employee is not positive/asymptomatic.	May continue to work but must wear a face covering around others (indoors and outdoors) for 10 days and monitor for symptoms. It is recommended the employee tests on day 5 after exposure to ensure employee is not positive/asymptomatic.
Vaccinated but not boosted	Quarantine for 10 days	Quarantine for 10 days	Quarantine for a minimum of 5 days. On 6 th day, employee may provide a negative COVID-19 test result and return to work. Must wear a face covering round others (indoors and outdoors) for 10 days and monitor for symptoms.
Not vaccinated or undisclosed	Quarantine for 10 days	Quarantine for 10 days	Quarantine for a minimum of 5 days. On 6 th day, employee may provide a negative COVID-19 test result and return to work. Must wear a face covering round others (indoors and outdoors) for 10 days and monitor for symptoms.